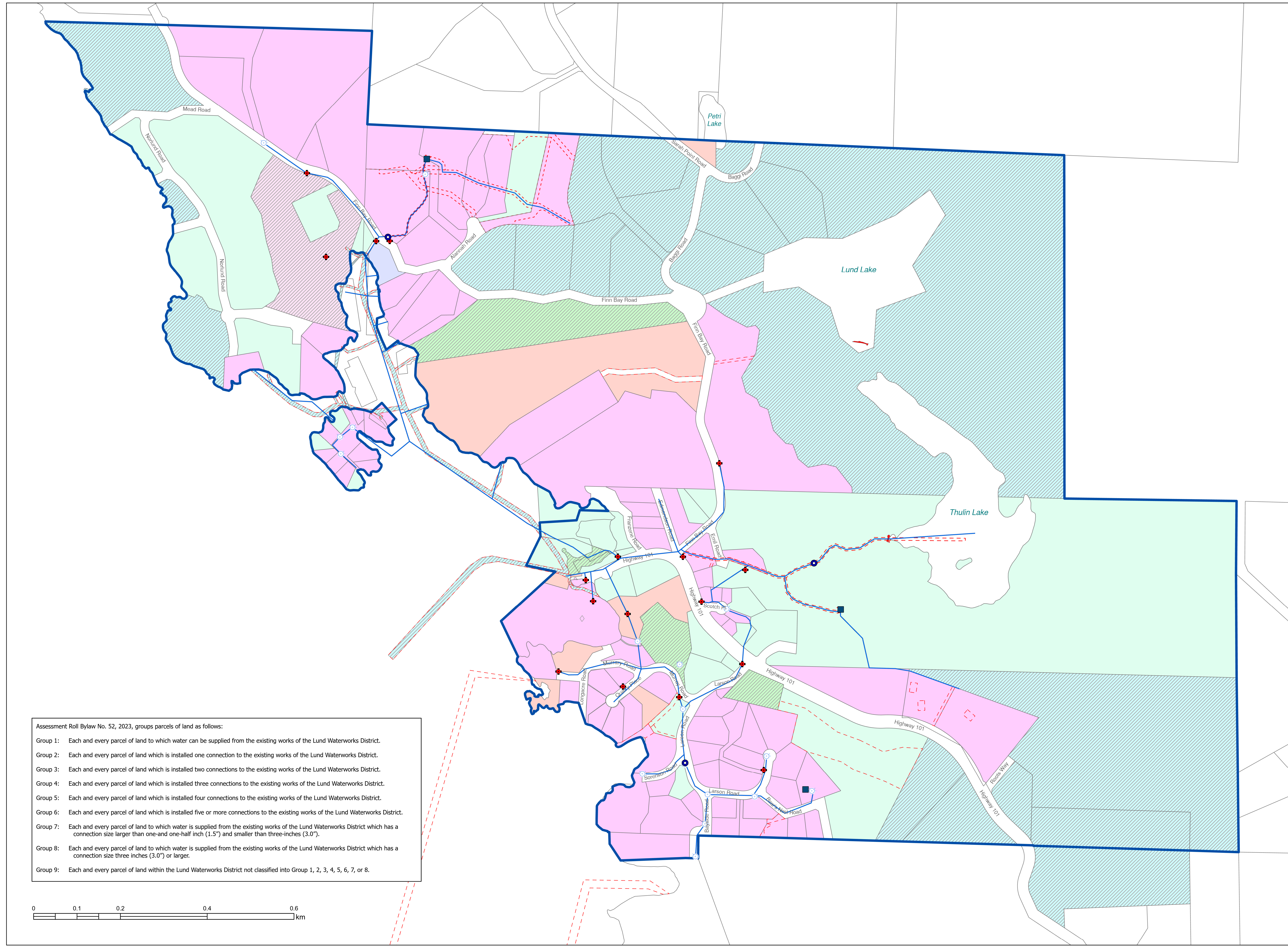
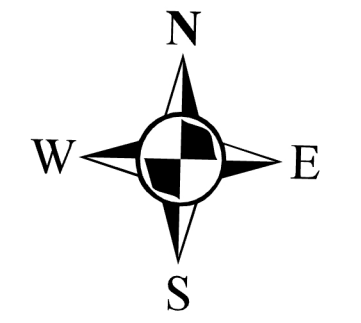


Lund Waterworks
Parcel Categories & Service Area Boundary
 according to
Assessment Roll Bylaw No. 52, 2023

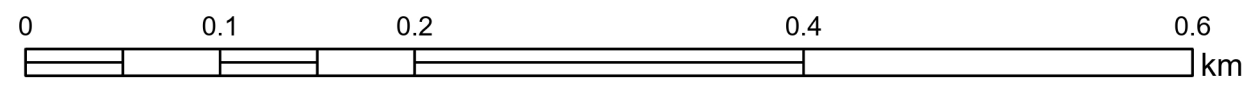
Updated May 22, 2026

Note:
 In the event of a conflict between the groupings shown on this map and the groupings shown on the 2026 Assessment Roll, the 2026 Assessment Roll prevails.



Assessment Roll Bylaw No. 52, 2023, groups parcels of land as follows:

- Group 1: Each and every parcel of land to which water can be supplied from the existing works of the Lund Waterworks District.
- Group 2: Each and every parcel of land which is installed one connection to the existing works of the Lund Waterworks District.
- Group 3: Each and every parcel of land which is installed two connections to the existing works of the Lund Waterworks District.
- Group 4: Each and every parcel of land which is installed three connections to the existing works of the Lund Waterworks District.
- Group 5: Each and every parcel of land which is installed four connections to the existing works of the Lund Waterworks District.
- Group 6: Each and every parcel of land which is installed five or more connections to the existing works of the Lund Waterworks District.
- Group 7: Each and every parcel of land to which water is supplied from the existing works of the Lund Waterworks District which has a connection size larger than one-and-one-half inch (1.5") and smaller than three-inches (3.0").
- Group 8: Each and every parcel of land to which water is supplied from the existing works of the Lund Waterworks District which has a connection size three inches (3.0") or larger.
- Group 9: Each and every parcel of land within the Lund Waterworks District not classified into Group 1, 2, 3, 4, 5, 6, 7, or 8.



Legend

- Parcel
- Surveyed ROW's / Easements / Interest Parcels
- Hydrant
- Standpipe
- Pump Station
- Reservoir
- Lund Water Mains

Categorized Parcels

- Group 1
- Group 2
- Group 3
- Group 4
- Group 6
- Group 7
- Group 8
- Group 9
- LWD Service Boundary